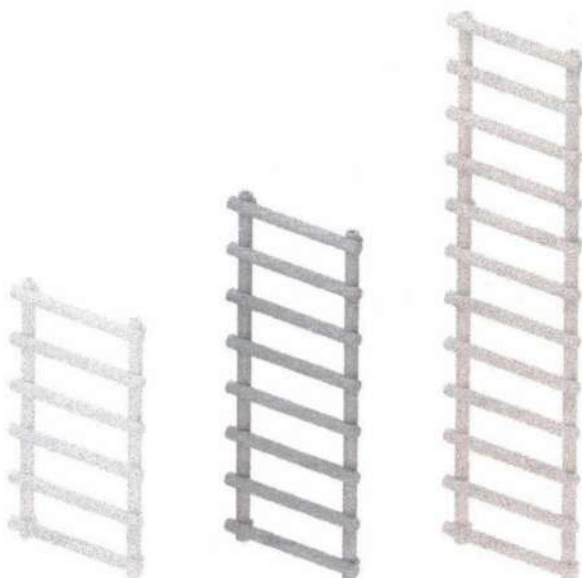


Instructions Manual

Design Radiator



Please read these instructions thoroughly before starting installation



Bracket Box Components			
1	Blank Plug	4	Bracket Stem (e)
1	Air Vent Plug	4	Mini Screw (f)
4	Wall Plug (a)		
4	Wall Support (b)	1	Hexagon Key (g)
4	Washer (c)		
4	Wall Screw (d)		

**PLEASE CHECK THAT ALL COMPONENTS ARE PRESENT
AND THAT THE PRODUCT HAS NOT SUFFERED ANY
DAMAGED DURING TRANSIT**

This radiator is manufactured from Mild Steel and it is only suitable for installation within a central heating system with a corrosion inhibitor added to the water.

Installation should be carried out by a suitably qualified professional or other fully competent person and in accordance with the relevant British and European standards (BS7593:1992, EN12828:203, EN12831:2003, EN14336:2004) & all applicable building regulations.

When drilling or fixing into walls, floors or ceilings it is essential that you check for pipes and wires before commencing. Please ensure that you wear all necessary personal protective equipment.

This product carries a warranty against faulty materials & manufacturing defects. The warranty does not cover any defect arising from damage, negligence, usage outside the products intended purpose or fair wear & tear. The warranty does not cover pinholes or other issues caused by insufficient cleansing or protection of the central heating system.

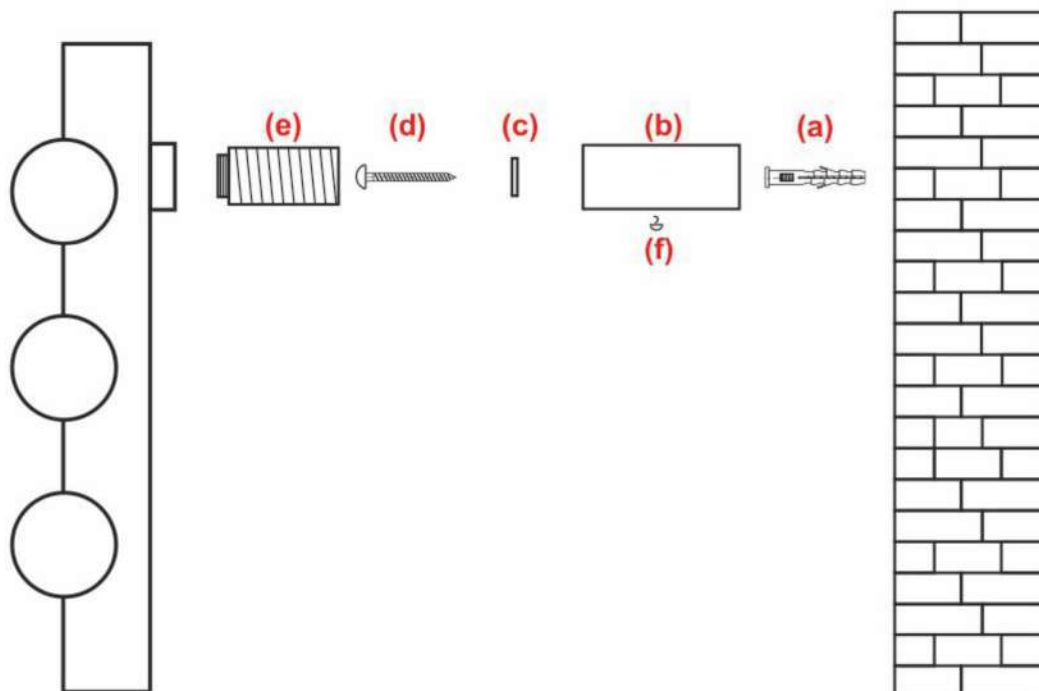
Regular cleaning with a soft cloth will keep the surface of your product looking new. Soapy water can be used to remove stubborn marks. Do not use abrasive or chemical cleaners as these will damage the surface finish over time.

Maximum Working Temperature 110 °C
Reaction to Fire Class A1

Instructions Manual

Design Radiator

1. Wind a thick layer (at least 6 turns) of PTFE tape, clockwise around the radiator valve tails (not supplied), screw the radiator valve tails into the bottom two threads in the upright channels and tighten firmly with a 22mm or adjustable spanner.
2. Check that the wall is strong enough to hold the weight of the towel rail. Mark your preferred bracket positions on the wall and drill holes for the fixings you intend to use. The wall plugs supplied are only suitable for solid walls, you will need alternative fixings for other wall types.
3. Screw the bracket bases to the wall using the washers & wall screws provided or alternative fixings. The holes for the mini screws should be facing downward.
4. Screw the bracket stems into the threads on the back of the towel rail.
5. Align the bracket stems with the bracket bases and push the towel rail back into position.
6. Push the radiator flat against the wall and insert the mini screws into the bottom of the wall supports and tighten with a screwdriver.
7. Connect the radiator valves (not supplied) and fill the system to check for leaks and fix as necessary.
8. Flush the entire system with a DWTA approved central heating cleanser and then refill using a DWTA approved central heating protector.
9. Run the system up to full temperature and release any trapped air using the air vent plug and the installation is finished.



⚠ Maximum working pressure of this radiator is 4 bar. This radiator is to be used on domestic central heating systems only. (Not suitable for use on direct hot water systems), Please consult your engineer or supplier.